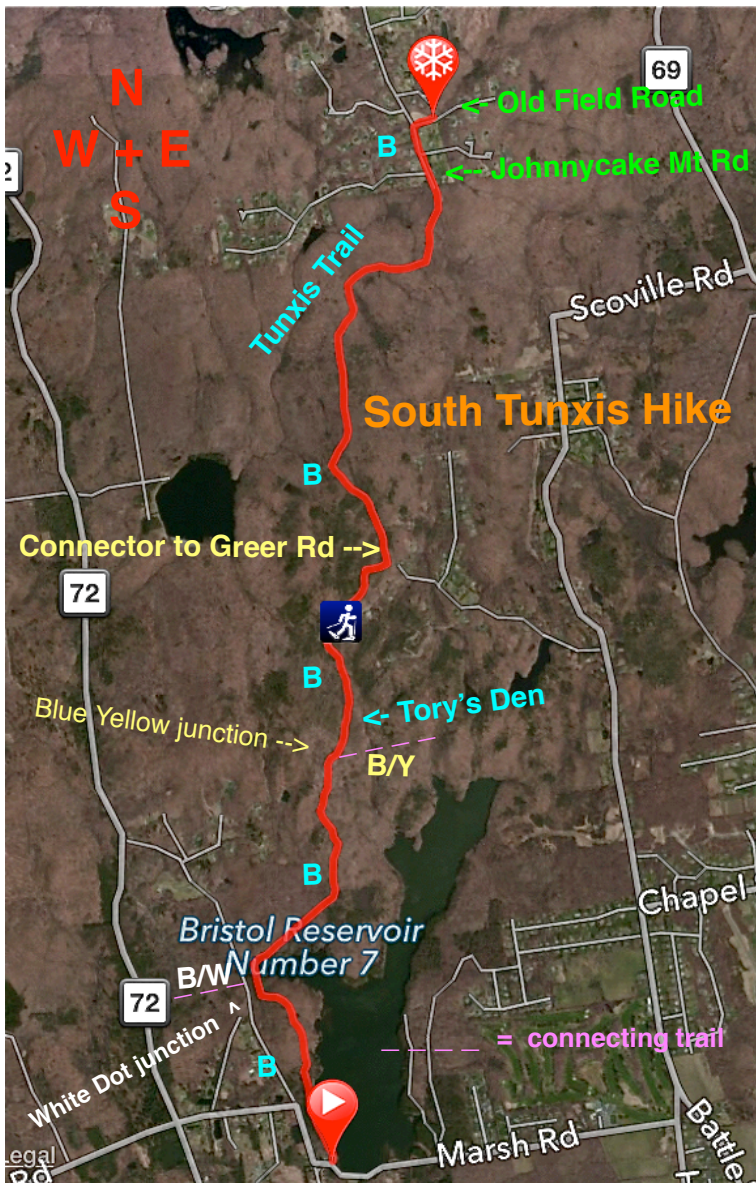


Tunxis Trail South:

Class 1: 8.8 miles & 2,160' vertical
4.5 -5.6 hours

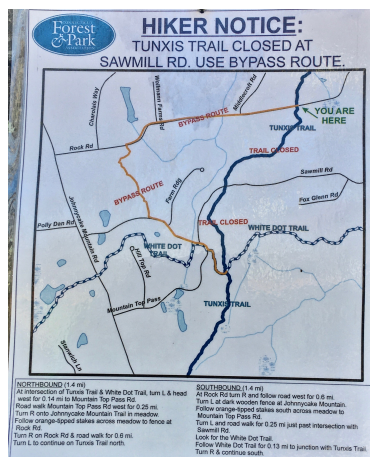


Park on Old Field Road ,which is off of Johnnycake Mt Road (41.749722 -72.991694). Park 50 yards west of the first driveway. Follow the blue blazes (B) south along both of these the paved roads. At 0.3 miles hike straight past the cul-de-sac entering the forest. At 1.8 you begin to ascend, passing the Connector Trail to Greer Road. This rolling section of the B trail reaches the Tory's Den area at 2.8 Keep straight past the junction with the Blue Yellow Trail at 2.9. At 3.5, the Trail takes a sharp left turn 100 yards in front of a reservoir gate. At 4.4 miles, the Tunxis Trail ends at another reservoir gate. Parking for a few cars (41.699667 -72.998167) is located across the street or by a green at the junction of Marsh & East Plymouth Road

This could be done as an "out & back 8.8 hike" totaling 8.8 miles or a one way using 2 cars totaling 4.4. Mileage summary going one way south:
 Enter the forest at 0.3 > pass Greer Rd connector at 1.8 > pass B/Y at 2.9 > 3.5 turn left > reach Marsh Rd at 4.4

Tunxis Trail Center:

Class 1: 7.8 miles & 2,160' vertical
4.0 hours



Tunxis Center Bypass photo

It is important to find this bypass link since it has detailed text directions going north and south, plus a quality map.



The Center Tunxis Hike requires a bypass due to a 2019 housing project on Saw Mill Road. (note Bypass link)

Parking on Old Field Road (41.749722 -72.991694), hike north on the B trail, turning left onto the B/W trail at 0.6 miles (note text for the Big Loop and Bypass photo). Follow detailed bypass directions. Turn north off Rock Road at 2.0, crossing route 4 at 3.0 miles. You reach the junction of Covey & Hotchkiss Rd at 3.9 miles. (41.782583 -72.969000)

This could be done as an "out & back hike" totaling 7.8 miles or a one way using 2 cars totaling 3.9 miles.

Mileage summary going one way north:
 Hike B north to start of bypass at 0.6 > left off Rock Rd at 2.0 > cross rt 4 at 3.0 > reach your car at 3.9