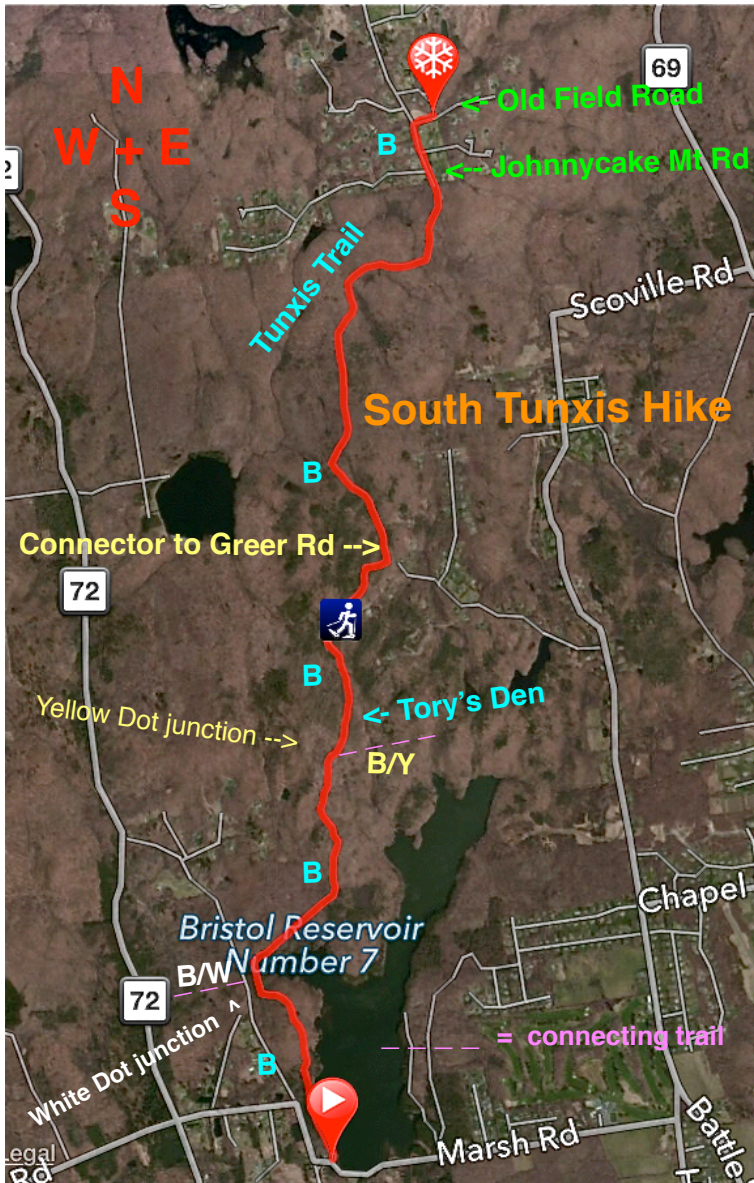
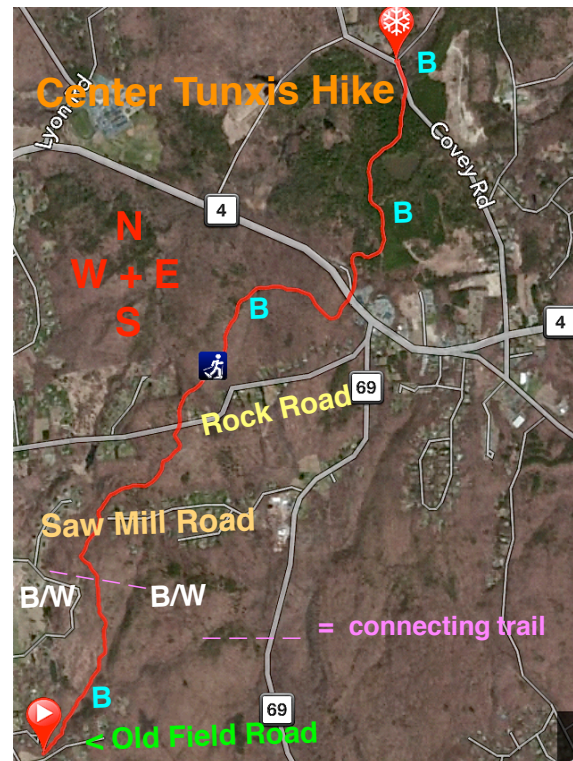


## Tunxis Trail South:

**Class 1: 4.4 miles & 1,080' vertical  
2.1 hours**



**Tory's Den**



Park on Old Field Road, which is off of Johnnycake Mt Road (41°44'59.0"N 72°59'30.1"W). Park 50 yards west of the first driveway. Follow the blue blazes (B) south along both of these the paved roads. At 0.3 miles hike straight past the cul-de-sac entering the forest. At 1.8 begin to climb, passing the Connector Trail to Greer Road. Hiking on this rolling trail reaches Tory's Den at 2.8 (photo; info: <http://burlingtonct.us/visitors/Torys-Den.php>). Keep straight past the junction with the Yellow Dot Trail at 2.9. At 3.5, the Trail takes a sharp left turn 100 yards in front of a reservoir gate. At 4.4 miles, the Tunxis Trail ends at another reservoir gate. Parking for a few cars is located across the street or by a green at the junction of Marsh & East Plymouth Rd (41°41'58.8"N 72°59'53.4"W)

This could be done as an "out & back 8.8 hike" totaling 8.8 miles or a one way using 2 cars totaling 4.4.

Mileage summary going one way south:

Enter the forest at 0.3 > pass Greer Rd connector at 1.8 > pass B/Y at 2.9 > at 3.5 turn left > reach Marsh Rd at 4.4

The Center Tunxis Hike is closed in 2019 due to a housing development project a quarter mile either side of Saw Mill Road. A 2.0 mile "out & back hike" from Old Field Road (41°44'59.0"N 72°59'30.1"W) and a 4.5 mile "out & back hike" from Covey Road are still open (41°41'58.8"N 72°59'53.4"W). Parking can also be found at the Tunxis Trail crossing of route 4 which might provide another option.

Mileage summary going one way north: Cross B/W trail at 0.6 > turn around at 1.0 where the forest was removed.

Mileage summary going one way south: Cross route 4 at at 1.0 > cross Rock Rd. at 2.0 > turn around at 2.25 when you see Saw Mill Road.